



**COLORMATIC**



Spot <sup>offset</sup> colours  
"in a minute"



ColorMatic is a Tronrud Engineering company



# Accuracy



## Spot colours in a minute

- Colour precision is vital to print quality. ColorMatic is the ultimate tool for achieving print quality.
- The ColorMatic's mixer head ensures accurate formulations.
- Reduced down-time making colour proofing and pre-press adjustments means more efficient print runs.
- Avoid pilot error on rush jobs and short runs.
- Improved productivity results in improved profits.



# Don't waste

Manual mixing wastes a significant proportion of your expensive ink. That's ink on your hands. Ink left in the tins. Skins, drips and streaks where you don't need them. Cleaning up is tedious, unproductive and a time-consuming chore. The wasted ink – and cleaning solvents – are harmful to the environment.



# Save the Environment

With ColorMatic, the ink goes exactly where it should go and nowhere else. The advanced compressed-air system extracts virtually every drop of ink from the tin. As environmental regulations become stricter, you'll be glad you had the foresight to deal with the problem of waste disposal.

*ColorMatic extracts virtually every drop of ink from the tin.*



# The Concept

People like you inspired the concept of ColorMatic. Our engineering team refined the concept in close co-operation with printers to meet the highest standards in terms of functionality and quality.

The ColorMatic ID-2500 is designed to serve printers using small to medium-sized ink batches, an ideal solution for printers who frequently use spot colours in their production. Our customers represent a variety of printers such as label printers, envelope printers, business forms printers, plastic cup printers, packaging

printers, business stationery printers and security printers. Our patented dosing principle even allows for the use of high-viscosity UV inks.

To meet an increasing demand from printers as well as printing ink manufacturers, we launched the ColorMatic ID-5000, based on the ID-2500, but with an option to add external pumps to feed the most frequently used ink from drums. The ID-5000 is a turnkey industrial solution designed for larger ink batches, suitable for both printers and ink manufactures.



When you replace tins, the transparent cover panel slides up out of the way automatically.



- High performance
- Low maintenance
- Attractive design
- Compact
- Modular construction

# Easy to learn Easy to use

## Easy to learn:

It takes five minutes to learn how to use the ColorMatic to dose ink. In less than a day you should master every aspect of operating the ColorMatic.

## Easy to use:

Select the colour. Select the quantity. Press to start dosing the ink.

## Easy to clean:

Wipe down the dosing plate with cleaning fluid once a day. It takes less than a minute.

## Easy to maintain:

Every detail of the ColorMatic has been designed for maximum reliability and minimum maintenance.

## Easy to operate:

The touch screen makes ColorMatic easy to operate.



# ID-2500 and ID-5000

## General facts and Figures

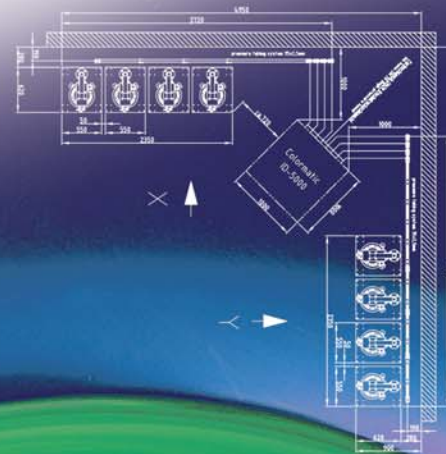
- Room for 15 base colours. (14 Pantone base colour + 1 spare) using standard 2.5 kg tins.
- Designed for handling high-viscosity offset and UV inks.
- All customized colours will be supplied with their own recipe number. Capacity for 100,000 recipes.
- Minimum dose 1g+.
- The maximum dose for ID2500 is 2,500g and for ID 5000 is 7.500 g
- High-precision dosage and capacity
  - Up to 2500 g has a tolerance of  $\pm 0.2$  g. per base colour. (ID2500 and ID5000)
  - Up to 7500 g has a tolerance of  $\pm 0.4$  g. per base colour. (ID5000)
  - Up to 1000 g has a tolerance of  $\pm 0.1$  g. per base colour. (Option ID2500)
- Viscosity/temperature
  - 120 to 180 poise viscosity 12° to 30° C
    - o Higher than 35° C you need air condition
  - 180 to 280 poise viscosity 18° to 30° C
    - o Higher than 35° C you need air condition
  - 280 to 400 poise viscosity 30° to 40° C
    - o Higher than 40° C requires conditioned facilities.
- Integrated statistics for materials and formulas provide an overview of ink consumption.
- The "Change Base Colour" function makes it easy to change ink tins.
- Test results show 99.7% extraction of the ink from the tin.
- It is possible to use today's preset colour series as formulas.
- Even as little as 5 mixes per day means you could save your money back.

## Technical Specifications

<b>Voltage</b>	Wide range 85-264 VAC 50/60 Hz
<b>Air supply</b>	6 Bar
<b>Weight</b>	690 kg
<b>Dimensions</b>	Length: 1050 mm Width: 1000 mm High: 1700 mm
<b>Noise level</b>	< 80 dB

## Special facts for ID5000

- Built on proven technology, the ColorMatic ID 5000 can be fitted with 8 external pumps mounted on 20 to 200 kg drums.
- As an option can the ColorMatic be fitted with 15 pumps mounted on 20 to 200 kg drums.
- Pumps sourced/supplied by third party manufacturers or from a distributor.
- Choose the pumps and drum size to suit your individual needs.
- The system is flexible and can be upgraded easily at a later date.
- The ID 5000 is designed for medium to large users of spot colours, and also meets the requirements of printing ink suppliers.
- Viscosity/pressure using external pumps each pump
  - 120 to 180 poise viscosity max 1,6 bar on external pumps
  - Higher than 180 poise viscosity max 2,0 bar on external pumps



# Options

## Colour recipe



- The ColorMatic can be supported with PANTONE® Color Formula Guide or HKS® Colour Map.

## X-rite



- CM software can import file format directly from X-rite (GretagMacbeth™) ink formulation software.

## Label printer

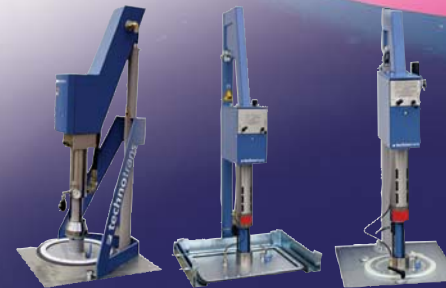
- With the recipe label printer you can mark your containers with vital data, such as
  - Date
  - Ink name/client reference
  - Recipe number
  - Quantity
  - Recipe details



Recipe label	
Date:	17 april 2008
Recipe number:	10000
Recipe name:	Tambula
Quantity	250 [g]
Recipe details:	
Colour	%
1 White	80
2 Process Blue	19
3 Green	21
4 Black	20
5	
6	

## Pumps

- Pumps for Offset color from different suppliers
- Pumps for UV ink
- Pumps supplied for 25 to 200 kg.
- ID-5000 is delivered standard with interface for 8 pumps, as an option we can deliver for 15 pumps.



## Biaxial Mixer VISCO 500

- Short mixing times
- High process safety
- Suitable for metal and plastic containers
- Highly efficient mixing
- Self-adjusting rotation speeds, depending on containers height
- Biaxial mixing exerts little stress on the container and its contents
- Little air lock, no micro bubbles as are formed when mixing with the help of agitators



ColorMatic – a revolution  
in ink preparation.

ColorMatic – saving time,  
money and the environment.

Accuracy to the last drop.



ColorMatic AS  
Flyglassveien 20  
N-3514 Hønefoss, Norway  
Tel: + 47 32 16 18 20  
Fax: +47 32 15 75 68  
mail@colormatic.no  
www.colormatic.no

Distributor/Agent: